



ACS Population Summary

Forrest County, MS
 Forrest County, MS (28035)
 Geography: County

Forrest County Report - Contact Wyatt

	2009 - 2013 ACS Estimate	Percent	MOE(±)	Reliability
TOTALS				
Total Population	75,991		0	High
Total Households	27,822		631	High
Total Housing Units	32,316		163	High
POPULATION AGE 15+ YEARS BY MARITAL STATUS				
Total	60,885	100.0%	74	High
Never married	23,742	39.0%	680	High
Married	26,418	43.4%	792	High
Widowed	3,727	6.1%	331	High
Divorced	6,998	11.5%	497	High
POPULATION AGE 3+ YEARS BY SCHOOL ENROLLMENT				
Total	72,469	100.0%	284	High
Enrolled in school	23,998	33.1%	709	High
Enrolled in nursery school, preschool	1,268	1.7%	276	Medium
Public school	989	1.4%	249	Medium
Private school	279	0.4%	116	Medium
Enrolled in kindergarten	1,022	1.4%	253	Medium
Public school	968	1.3%	250	Medium
Private school	54	0.1%	49	Low
Enrolled in grade 1 to grade 4	3,695	5.1%	401	High
Public school	3,353	4.6%	403	High
Private school	342	0.5%	109	Medium
Enrolled in grade 5 to grade 8	4,030	5.6%	388	High
Public school	3,633	5.0%	374	High
Private school	397	0.5%	173	Medium
Enrolled in grade 9 to grade 12	3,608	5.0%	275	High
Public school	3,166	4.4%	272	High
Private school	442	0.6%	197	Medium
Enrolled in college undergraduate years	8,979	12.4%	598	High
Public school	7,716	10.6%	579	High
Private school	1,263	1.7%	405	Medium
Enrolled in graduate or professional school	1,396	1.9%	279	Medium
Public school	987	1.4%	224	Medium
Private school	409	0.6%	176	Medium
Not enrolled in school	48,471	66.9%	713	High
POPULATION AGE 25+ YEARS BY EDUCATIONAL ATTAINMENT				
Total	45,543	100.0%	189	High
No schooling completed	492	1.1%	135	Medium
Nursery School	0	0.0%	29	Low
Kindergarten	27	0.1%	38	Low
1-4th Grade	300	0.7%	155	Medium
5-8th Grade	1,555	3.4%	285	High
Some High School	5,003	11.0%	574	High
High School Diploma	10,413	22.9%	731	High
GED	2,133	4.7%	350	High
Some College	10,213	22.4%	635	High
Associate's degree	3,089	6.8%	318	High
Bachelor's degree	7,351	16.1%	530	High
Master's degree	3,453	7.6%	361	High
Professional school degree	740	1.6%	191	Medium
Doctorate degree	774	1.7%	183	Medium

Source: U.S. Census Bureau, 2009-2013 American Community Survey

Reliability: High Medium Low

November 22, 2015



ACS Population Summary

Forrest County, MS
 Forrest County, MS (28035)
 Geography: County

Forrest County Report - Contact Wyatt

	2009 - 2013 ACS Estimate	Percent	MOE(±)	Reliability
POPULATION AGE 5+ YEARS BY LANGUAGE SPOKEN AT HOME AND ABILITY TO SPEAK ENGLISH				
Total	70,550	100.0%	35	
5 to 17 years				
Speak only English	12,041	17.1%	176	
Speak Spanish	412	0.6%	138	
Speak English "very well" or "well"	412	0.6%	141	
Speak English "not well"	0	0.0%	29	
Speak English "not at all"	0	0.0%	29	
Speak other Indo-European languages	58	0.1%	50	
Speak English "very well" or "well"	37	0.1%	44	
Speak English "not well"	21	0.0%	24	
Speak English "not at all"	0	0.0%	29	
Speak Asian and Pacific Island languages	0	0.0%	29	
Speak English "very well" or "well"	0	0.0%	29	
Speak English "not well"	0	0.0%	29	
Speak English "not at all"	0	0.0%	29	
Speak other languages	0	0.0%	29	
Speak English "very well" or "well"	0	0.0%	29	
Speak English "not well"	0	0.0%	29	
Speak English "not at all"	0	0.0%	29	
18 to 64 years				
Speak only English	46,712	66.2%	299	
Speak Spanish	1,588	2.3%	213	
Speak English "very well" or "well"	916	1.3%	204	
Speak English "not well"	444	0.6%	155	
Speak English "not at all"	228	0.3%	164	
Speak other Indo-European languages	440	0.6%	192	
Speak English "very well" or "well"	401	0.6%	157	
Speak English "not well"	39	0.1%	50	
Speak English "not at all"	0	0.0%	29	
Speak Asian and Pacific Island languages	321	0.5%	150	
Speak English "very well" or "well"	310	0.4%	142	
Speak English "not well"	0	0.0%	29	
Speak English "not at all"	11	0.0%	17	
Speak other languages	49	0.1%	36	
Speak English "very well" or "well"	49	0.1%	36	
Speak English "not well"	0	0.0%	29	
Speak English "not at all"	0	0.0%	29	
65 years and over				
Speak only English	8,835	12.5%	60	
Speak Spanish	62	0.1%	55	
Speak English "very well" or "well"	40	0.1%	33	
Speak English "not well"	22	0.0%	26	
Speak English "not at all"	0	0.0%	29	
Speak other Indo-European languages	20	0.0%	23	
Speak English "very well" or "well"	20	0.0%	23	
Speak English "not well"	0	0.0%	29	
Speak English "not at all"	0	0.0%	29	
Speak Asian and Pacific Island languages	12	0.0%	17	
Speak English "very well" or "well"	0	0.0%	29	
Speak English "not well"	0	0.0%	29	
Speak English "not at all"	12	0.0%	17	
Speak other languages	0	0.0%	29	
Speak English "very well" or "well"	0	0.0%	29	
Speak English "not well"	0	0.0%	29	
Speak English "not at all"	0	0.0%	29	

Source: U.S. Census Bureau, 2009-2013 American Community Survey

Reliability: high medium low

November 22, 2015



ACS Population Summary

Forrest County, MS
 Forrest County, MS (28035)
 Geography: County

Forrest County Report - Contact Wyatt

	2009 - 2013 ACS Estimate	Percent	MOE(±)	Reliability
WORKERS AGE 16+ YEARS BY PLACE OF WORK				
Total	31,986	100.0%	989	High
Worked in state and in county of residence	22,114	69.1%	949	High
Worked in state and outside county of residence	8,707	27.2%	678	High
Worked outside state of residence	1,165	3.6%	302	Medium
WORKERS AGE 16+ YEARS BY MEANS OF TRANSPORTATION TO WORK				
Total	31,986	100.0%	989	High
Drove alone	25,490	79.7%	996	High
Carpooled	3,362	10.5%	535	High
Public transportation (excluding taxicab)	189	0.6%	156	Low
Bus or trolley bus	172	0.5%	156	Low
Streetcar or trolley car	0	0.0%	29	
Subway or elevated	10	0.0%	15	Low
Railroad	0	0.0%	29	
Ferryboat	7	0.0%	11	Low
Taxicab	0	0.0%	29	
Motorcycle	47	0.1%	47	Low
Bicycle	259	0.8%	110	Medium
Walked	975	3.0%	190	High
Other means	1,039	3.2%	287	Medium
Worked at home	625	2.0%	185	Medium
WORKERS AGE 16+ YEARS (WHO DID NOT WORK FROM HOME) BY TRAVEL TIME TO WORK				
Total	31,361	100.0%	964	High
Less than 5 minutes	1,699	5.4%	300	High
5 to 9 minutes	4,339	13.8%	461	High
10 to 14 minutes	5,300	16.9%	554	High
15 to 19 minutes	7,658	24.4%	652	High
20 to 24 minutes	4,629	14.8%	506	High
25 to 29 minutes	1,529	4.9%	319	Medium
30 to 34 minutes	3,107	9.9%	408	High
35 to 39 minutes	413	1.3%	154	Medium
40 to 44 minutes	436	1.4%	143	Medium
45 to 59 minutes	758	2.4%	201	Medium
60 to 89 minutes	599	1.9%	179	Medium
90 or more minutes	894	2.9%	240	Medium
Average Travel Time to Work (in minutes)	20.8		1.3	High



ACS Population Summary

Forrest County, MS
 Forrest County, MS (28035)
 Geography: County

Forrest County Report - Contact Wyatt

	2009 - 2013 ACS Estimate	Percent	MOE(±)	Reliability
CIVILIAN EMPLOYED POPULATION AGE 16+ YEARS BY OCCUPATION				
Total	31,919	100.0%	996	High
Management	2,273	7.1%	355	High
Business and financial operations	1,044	3.3%	250	Medium
Computer and mathematical	323	1.0%	124	Medium
Architecture and engineering	369	1.2%	141	Medium
Life, physical, and social science	146	0.5%	73	Medium
Community and social services	593	1.9%	168	Medium
Legal	259	0.8%	112	Medium
Education, training, and library	2,736	8.6%	345	High
Arts, design, entertainment, sports, and media	474	1.5%	154	Medium
Healthcare practitioner, technologists, and technicians	2,177	6.8%	350	High
Healthcare support	661	2.1%	179	Medium
Protective service	459	1.4%	176	Medium
Food preparation and serving related	2,282	7.1%	338	High
Building and grounds cleaning and maintenance	1,527	4.8%	285	High
Personal care and service	1,241	3.9%	288	Medium
Sales and related	3,912	12.3%	498	High
Office and administrative support	4,300	13.5%	428	High
Farming, fishing, and forestry	237	0.7%	113	Medium
Construction and extraction	1,895	5.9%	313	High
Installation, maintenance, and repair	1,178	3.7%	288	Medium
Production	1,902	6.0%	359	High
Transportation and material moving	1,931	6.0%	375	High
CIVILIAN EMPLOYED POPULATION AGE 16+ YEARS BY INDUSTRY				
Total	31,919	100.0%	996	High
Agriculture, forestry, fishing and hunting	297	0.9%	119	Medium
Mining, quarrying, and oil and gas extraction	515	1.6%	202	Medium
Construction	2,012	6.3%	364	High
Manufacturing	2,767	8.7%	402	High
Wholesale trade	701	2.2%	195	Medium
Retail trade	4,432	13.9%	547	High
Transportation and warehousing	1,066	3.3%	246	Medium
Utilities	326	1.0%	133	Medium
Information	329	1.0%	139	Medium
Finance and insurance	962	3.0%	197	Medium
Real estate and rental and leasing	583	1.8%	183	Medium
Professional, scientific, and technical services	1,233	3.9%	263	Medium
Management of companies and enterprises	11	0.0%	16	Low
Administrative and support and waste management services	856	2.7%	240	Medium
Educational services	4,233	13.3%	406	High
Health care and social assistance	5,030	15.8%	443	High
Arts, entertainment, and recreation	674	2.1%	202	Medium
Accommodation and food services	3,026	9.5%	400	High
Other services, except public administration	1,498	4.7%	248	High
Public administration	1,368	4.3%	280	Medium
FEMALES AGE 20-64 YEARS BY AGE OF OWN CHILDREN AND EMPLOYMENT STATUS				
Total	22,904	100.0%	171	High
Own children under 6 years only	2,371	10.4%	385	High
In labor force	1,912	8.3%	346	High
Not in labor force	459	2.0%	168	Medium
Own children under 6 years and 6 to 17 years	1,665	7.3%	294	High
In labor force	1,083	4.7%	275	Medium
Not in labor force	582	2.5%	177	Medium
Own children 6 to 17 years only	4,203	18.4%	384	High
In labor force	3,127	13.7%	355	High
Not in labor force	1,076	4.7%	254	Medium
No own children under 18 years	14,665	64.0%	507	High
In labor force	9,439	41.2%	591	High
Not in labor force	5,226	22.8%	451	High

Source: U.S. Census Bureau, 2009-2013 American Community Survey

Reliability: High Medium Low

November 22, 2015



ACS Population Summary

Forrest County, MS
 Forrest County, MS (28035)
 Geography: County

Forrest County Report - Contact Wyatt

	2009 - 2013 ACS Estimate	Percent	MOE(±)	Reliability
POPULATION BY RATIO OF INCOME TO POVERTY LEVEL				
Total	71,828	100.0%	479	High
Under .50	9,213	12.8%	1,158	High
.50 to .99	10,645	14.8%	1,197	High
1.00 to 1.24	4,082	5.7%	720	High
1.25 to 1.49	3,394	4.7%	777	Medium
1.50 to 1.84	5,355	7.5%	975	High
1.85 to 1.99	2,190	3.0%	708	Medium
2.00 and over	36,949	51.4%	1,529	High
CIVILIAN NONINSTITUTIONALIZED POPULATION BY AGE & TYPES OF HEALTH INSURANCE COVERAGE				
Total	74,752	100.0%	197	High
Under 18 years:	17,909	24.0%	85	High
One Type of Health Insurance:	15,603	20.9%	545	High
Employer-Based Health Ins Only	5,806	7.8%	598	High
Direct-Purchase Health Ins Only	815	1.1%	245	Medium
Medicare Coverage Only	170	0.2%	110	Medium
Medicaid Coverage Only	8,359	11.2%	735	High
TRICARE/Military Hlth Cov Only	453	0.6%	202	Medium
VA Health Care Only	0	0.0%	29	Low
2+ Types of Health Insurance	956	1.3%	352	Medium
No Health Insurance Coverage	1,350	1.8%	390	Medium
18 to 34 years:	23,483	31.4%	179	High
One Type of Health Insurance:	15,547	20.8%	664	High
Employer-Based Health Ins Only	10,959	14.7%	703	High
Direct-Purchase Health Ins Only	1,670	2.2%	302	High
Medicare Coverage Only	99	0.1%	75	Low
Medicaid Coverage Only	2,094	2.8%	344	High
TRICARE/Military Hlth Cov Only	612	0.8%	185	Medium
VA Health Care Only	113	0.2%	100	Low
2+ Types of Health Insurance	1,228	1.6%	271	Medium
No Health Insurance Coverage	6,708	9.0%	645	High
35 to 64 years:	24,748	33.1%	167	High
One Type of Health Insurance:	16,623	22.2%	547	High
Employer-Based Health Ins Only	12,100	16.2%	637	High
Direct-Purchase Health Ins Only	1,467	2.0%	270	High
Medicare Coverage Only	545	0.7%	192	Medium
Medicaid Coverage Only	1,853	2.5%	358	High
TRICARE/Military Hlth Cov Only	480	0.6%	212	Medium
VA Health Care Only	178	0.2%	87	Medium
2+ Types of Health Insurance	3,292	4.4%	427	High
No Health Insurance Coverage	4,833	6.5%	491	High
65+ years:	8,612	11.5%	106	High
One Type of Health Insurance:	2,631	3.5%	354	High
Employer-Based Health Ins Only	131	0.2%	93	Low
Direct-Purchase Health Ins Only	67	0.1%	55	Low
Medicare Coverage Only	2,433	3.3%	346	High
TRICARE/Military Hlth Cov Only	0	0.0%	29	Low
VA Health Care Only	0	0.0%	29	Low
2+ Types of Health Insurance	5,963	8.0%	368	High
No Health Insurance Coverage	18	0.0%	19	Low

Source: U.S. Census Bureau, 2009-2013 American Community Survey

Reliability: High Medium Low

November 22, 2015



ACS Population Summary

Forrest County, MS
 Forrest County, MS (28035)
 Geography: County

Forrest County Report - Contact Wyatt

	2009 - 2013 ACS Estimate	Percent	MOE(±)	Reliability
CIVILIAN POPULATION AGE 18 OR OLDER BY VETERAN STATUS				
Total	57,517	100.0%	183	High
Veteran	5,360	9.3%	426	High
Nonveteran	52,157	90.7%	470	High
Male	26,812	46.6%	174	High
Veteran	4,974	8.6%	415	High
Nonveteran	21,838	38.0%	454	High
Female	30,705	53.4%	110	High
Veteran	386	0.7%	131	Medium
Nonveteran	30,319	52.7%	180	High
CIVILIAN VETERANS AGE 18 OR OLDER BY PERIOD OF MILITARY SERVICE				
Total	5,360	100.0%	426	High
Gulf War (9/01 or later), no Gulf War (8/90 to 8/01), no Vietnam Era	673	12.6%	223	Medium
Gulf War (9/01 or later) and Gulf War (8/90 to 8/01), no Vietnam Era	408	7.6%	183	High
Gulf War (9/01 or later), and Gulf War (8/90 to 8/01), and Vietnam Era	43	0.8%	43	Low
Gulf War (8/90 to 8/01), no Vietnam Era	597	11.1%	174	Medium
Gulf War (8/90 to 8/01) and Vietnam Era	55	1.0%	51	Low
Vietnam Era, no Korean War, no World War II	1,358	25.3%	232	High
Vietnam Era and Korean War, no World War II	81	1.5%	55	Low
Vietnam Era and Korean War and World War II	0	0.0%	29	Low
Korean War, no Vietnam Era, no World War II	366	6.8%	107	Medium
Korean War and World War II, no Vietnam Era	6	0.1%	11	Low
World War II, no Korean War, no Vietnam Era	540	10.1%	131	Medium
Between Gulf War and Vietnam Era only	725	13.5%	170	Medium
Between Vietnam Era and Korean War only	409	7.6%	133	Medium
Between Korean War and World War II only	37	0.7%	43	Low
Pre-World War II only	62	1.2%	98	Low
HOUSEHOLDS BY POVERTY STATUS				
Total	27,822	100.0%	631	High
Income in the past 12 months below poverty level	7,321	26.3%	556	High
Married-couple family	1,186	4.3%	290	Medium
Other family - male householder (no wife present)	469	1.7%	167	Medium
Other family - female householder (no husband present)	2,118	7.6%	319	High
Nonfamily household - male householder	1,707	6.1%	329	High
Nonfamily household - female householder	1,841	6.6%	270	High
Income in the past 12 months at or above poverty level	20,501	73.7%	653	High
Married-couple family	10,019	36.0%	461	High
Other family - male householder (no wife present)	814	2.9%	184	Medium
Other family - female householder (no husband present)	2,594	9.3%	341	High
Nonfamily household - male householder	3,456	12.4%	381	High
Nonfamily household - female householder	3,618	13.0%	319	High



ACS Population Summary

Forrest County, MS
 Forrest County, MS (28035)
 Geography: County

Forrest County Report - Contact Wyatt

	2009 - 2013 ACS Estimate	Percent	MOE(±)	Reliability
HOUSEHOLDS BY INCOME				
Total	27,822	100.0%	631	High
Less than \$10,000	3,892	14.0%	444	High
\$10,000 to \$14,999	2,539	9.1%	390	High
\$15,000 to \$19,999	2,127	7.6%	296	High
\$20,000 to \$24,999	1,870	6.7%	284	High
\$25,000 to \$29,999	1,691	6.1%	268	High
\$30,000 to \$34,999	1,386	5.0%	269	High
\$35,000 to \$39,999	1,430	5.1%	267	High
\$40,000 to \$44,999	1,217	4.4%	224	High
\$45,000 to \$49,999	1,238	4.4%	224	High
\$50,000 to \$59,999	2,206	7.9%	317	High
\$60,000 to \$74,999	2,233	8.0%	303	High
\$75,000 to \$99,999	2,729	9.8%	403	High
\$100,000 to \$124,999	1,357	4.9%	221	High
\$125,000 to \$149,999	755	2.7%	172	Medium
\$150,000 to \$199,999	734	2.6%	197	Medium
\$200,000 or more	418	1.5%	119	Medium
Median Household Income	\$36,726		N/A	
Average Household Income	\$51,397		\$2,573	High
Per Capita Income	\$19,736		\$797	High
HOUSEHOLDS WITH HOUSEHOLDER AGE <25 YEARS BY INCOME				
Total	2,498	100.0%	332	High
Less than \$10,000	943	37.8%	230	Medium
\$10,000 to \$14,999	271	10.8%	119	Medium
\$15,000 to \$19,999	329	13.2%	133	Medium
\$20,000 to \$24,999	156	6.2%	86	Medium
\$25,000 to \$29,999	122	4.9%	62	Medium
\$30,000 to \$34,999	176	7.0%	128	Low
\$35,000 to \$39,999	167	6.7%	120	Low
\$40,000 to \$44,999	68	2.7%	59	Low
\$45,000 to \$49,999	54	2.2%	51	Low
\$50,000 to \$59,999	96	3.8%	75	Low
\$60,000 to \$74,999	45	1.8%	34	Low
\$75,000 to \$99,999	15	0.6%	25	Low
\$100,000 to \$124,999	48	1.9%	59	Low
\$125,000 to \$149,999	0	0.0%	29	Low
\$150,000 to \$199,999	0	0.0%	29	Low
\$200,000 or more	8	0.3%	15	Low
Median Household Income for HHR <25	\$15,400		N/A	
Average Household Income for HHR <25	\$21,946		\$6,278	Medium



ACS Population Summary

Forrest County, MS
 Forrest County, MS (28035)
 Geography: County

Forrest County Report - Contact Wyatt

	2009 - 2013 ACS Estimate	Percent	MOE(±)	Reliability
HOUSEHOLDS WITH HOUSEHOLDER AGE 25-44 YEARS BY INCOME				
Total	10,023	100.0%	525	High
Less than \$10,000	1,283	12.8%	266	Medium
\$10,000 to \$14,999	588	5.9%	167	Medium
\$15,000 to \$19,999	624	6.2%	174	Medium
\$20,000 to \$24,999	668	6.7%	208	Medium
\$25,000 to \$29,999	445	4.4%	147	Medium
\$30,000 to \$34,999	507	5.1%	153	Medium
\$35,000 to \$39,999	611	6.1%	187	Medium
\$40,000 to \$44,999	573	5.7%	170	Medium
\$45,000 to \$49,999	439	4.4%	148	Medium
\$50,000 to \$59,999	818	8.2%	191	Medium
\$60,000 to \$74,999	997	9.9%	219	Medium
\$75,000 to \$99,999	1,336	13.3%	287	Medium
\$100,000 to \$124,999	549	5.5%	155	Medium
\$125,000 to \$149,999	202	2.0%	109	Medium
\$150,000 to \$199,999	291	2.9%	132	Medium
\$200,000 or more	92	0.9%	56	Medium
Median Household Income for HHr 25-44	\$42,547		N/A	
Average Household Income for HHr 25-44	\$54,047		\$5,198	High
HOUSEHOLDS WITH HOUSEHOLDER AGE 45-64 YEARS BY INCOME				
Total	9,632	100.0%	306	High
Less than \$10,000	1,085	11.3%	237	Medium
\$10,000 to \$14,999	923	9.6%	234	Medium
\$15,000 to \$19,999	661	6.9%	174	Medium
\$20,000 to \$24,999	584	6.1%	198	Medium
\$25,000 to \$29,999	716	7.4%	164	Medium
\$30,000 to \$34,999	369	3.8%	139	Medium
\$35,000 to \$39,999	357	3.7%	109	Medium
\$40,000 to \$44,999	291	3.0%	109	Medium
\$45,000 to \$49,999	385	4.0%	143	Medium
\$50,000 to \$59,999	859	8.9%	200	Medium
\$60,000 to \$74,999	854	8.9%	180	Medium
\$75,000 to \$99,999	807	8.4%	166	Medium
\$100,000 to \$124,999	656	6.8%	152	Medium
\$125,000 to \$149,999	440	4.6%	136	Medium
\$150,000 to \$199,999	390	4.0%	134	Medium
\$200,000 or more	255	2.6%	100	Low
Median Household Income for HHr 45-64	\$41,271		N/A	
Average Household Income for HHr 45-64	\$58,495		\$4,647	High



ACS Population Summary

Forrest County, MS
 Forrest County, MS (28035)
 Geography: County

Forrest County Report - Contact Wyatt

	2009 - 2013 ACS Estimate	Percent	MOE(±)	Reliability
HOUSEHOLDS WITH HOUSEHOLDER AGE 65+ YEARS BY INCOME				
Total	5,669	100.0%	258	High
Less than \$10,000	581	10.2%	159	Medium
\$10,000 to \$14,999	757	13.4%	196	Medium
\$15,000 to \$19,999	513	9.0%	128	Medium
\$20,000 to \$24,999	462	8.1%	132	Medium
\$25,000 to \$29,999	408	7.2%	129	Medium
\$30,000 to \$34,999	334	5.9%	107	Medium
\$35,000 to \$39,999	295	5.2%	110	Medium
\$40,000 to \$44,999	285	5.0%	93	Medium
\$45,000 to \$49,999	360	6.4%	118	Medium
\$50,000 to \$59,999	433	7.6%	144	Medium
\$60,000 to \$74,999	337	5.9%	124	Medium
\$75,000 to \$99,999	571	10.1%	181	Medium
\$100,000 to \$124,999	104	1.8%	53	Medium
\$125,000 to \$149,999	113	2.0%	61	Medium
\$150,000 to \$199,999	53	0.9%	46	Low
\$200,000 or more	63	1.1%	46	High
Median Household Income for HHR 65+	\$31,202		N/A	
Average Household Income for HHR 65+	\$47,626		\$7,017	High
HOUSEHOLDS BY PUBLIC ASSISTANCE INCOME IN THE PAST 12 MONTHS				
Total	27,822	100.0%	631	High
With public assistance income	662	2.4%	193	Medium
No public assistance income	27,160	97.6%	675	High
HOUSEHOLDS BY FOOD STAMPS/SNAP STATUS				
Total	27,822	100.0%	631	High
With Food Stamps/SNAP	5,358	19.3%	388	High
With No Food Stamps/SNAP	22,464	80.7%	654	High
HOUSEHOLDS BY DISABILITY STATUS				
Total	27,822	100.0%	631	High
With 1+ Persons w/Disability	9,952	35.8%	699	High
With No Person w/Disability	17,870	64.2%	802	High

Data Note: N/A means not available. Population by Ratio of Income to Poverty Level represents persons for whom poverty status is determined. Household income represents income in 2013, adjusted for inflation.

2009-2013 ACS Estimate: The American Community Survey (ACS) replaces census sample data. Esri is releasing the 2009-2013 ACS estimates, five-year period data collected monthly from January 1, 2009 through December 31, 2013. Although the ACS includes many of the subjects previously covered by the decennial census sample, there are significant differences between the two surveys including fundamental differences in survey design and residency rules.

Margin of error (MOE): The MOE is a measure of the variability of the estimate due to sampling error. MOEs enable the data user to measure the range of uncertainty for each estimate with 90 percent confidence. The range of uncertainty is called the confidence interval, and it is calculated by taking the estimate +/- the MOE. For example, if the ACS reports an estimate of 100 with an MOE of +/- 20, then you can be 90 percent certain the value for the whole population falls between 80 and 120.

Reliability: These symbols represent threshold values that Esri has established from the Coefficients of Variation (CV) to designate the usability of the estimates. The CV measures the amount of sampling error relative to the size of the estimate, expressed as a percentage.

- High Reliability: Small CVs (less than or equal to 12 percent) are flagged green to indicate that the sampling error is small relative to the estimate and the estimate is reasonably reliable.
- Medium Reliability: Estimates with CVs between 12 and 40 are flagged yellow-use with caution.
- Low Reliability: Large CVs (over 40 percent) are flagged red to indicate that the sampling error is large relative to the estimate. The estimate is considered very unreliable.



ACS Housing Summary

Forrest County, MS
 Forrest County, MS (28035)
 Geography: County

Forrest County Report - Contact Wyatt

	2009-2013 ACS Estimate	Percent	MOE(±)	Reliability
TOTALS				
Total Population	75,991		0	High
Total Households	27,822		631	High
Total Housing Units	32,316		163	High
OWNER-OCCUPIED HOUSING UNITS BY VALUE				
Total	15,710	100.0%	599	High
Less than \$10,000	392	2.5%	158	Medium
\$10,000 to \$14,999	227	1.4%	103	Medium
\$15,000 to \$19,999	421	2.7%	135	Medium
\$20,000 to \$24,999	275	1.8%	112	Medium
\$25,000 to \$29,999	219	1.4%	109	Medium
\$30,000 to \$34,999	225	1.4%	80	Medium
\$35,000 to \$39,999	269	1.7%	118	Medium
\$40,000 to \$49,999	537	3.4%	159	Medium
\$50,000 to \$59,999	599	3.8%	148	Medium
\$60,000 to \$69,999	759	4.8%	188	Medium
\$70,000 to \$79,999	1,027	6.5%	203	Medium
\$80,000 to \$89,999	836	5.3%	199	Medium
\$90,000 to \$99,999	736	4.7%	193	Medium
\$100,000 to \$124,999	1,909	12.2%	309	High
\$125,000 to \$149,999	1,602	10.2%	259	High
\$150,000 to \$174,999	1,821	11.6%	280	High
\$175,000 to \$199,999	773	4.9%	167	Medium
\$200,000 to \$249,999	1,273	8.1%	280	Medium
\$250,000 to \$299,999	668	4.3%	175	Medium
\$300,000 to \$399,999	678	4.3%	177	Medium
\$400,000 to \$499,999	149	0.9%	70	Medium
\$500,000 to \$749,999	147	0.9%	78	Medium
\$750,000 to \$999,999	55	0.4%	39	Low
\$1,000,000 or more	113	0.7%	95	Low
Median Home Value	\$117,500		N/A	
Average Home Value	\$139,590		\$10,160	High
OWNER-OCCUPIED HOUSING UNITS BY MORTGAGE STATUS				
Total	15,710	100.0%	599	High
Housing units with a mortgage/contract to purchase/similar debt	8,888	56.6%	624	High
Second mortgage only	296	1.9%	115	Medium
Home equity loan only	873	5.6%	217	Medium
Both second mortgage and home equity loan	48	0.3%	47	Low
No second mortgage and no home equity loan	7,671	48.8%	575	High
Housing units without a mortgage	6,822	43.4%	479	High
AVERAGE VALUE BY MORTGAGE STATUS				
Housing units with a mortgage	\$146,128		\$16,181	High
Housing units without a mortgage	\$131,072		\$19,532	High



ACS Housing Summary

Forrest County, MS
 Forrest County, MS (28035)
 Geography: County

Forrest County Report - Contact Wyatt

	2009-2013 ACS Estimate	Percent	MOE(±)	Reliability
RENTER-OCCUPIED HOUSING UNITS BY CONTRACT RENT				
Total	12,112	100.0%	590	High
With cash rent	10,997	90.8%	599	High
Less than \$100	224	1.8%	113	Medium
\$100 to \$149	214	1.8%	103	Medium
\$150 to \$199	212	1.8%	106	Medium
\$200 to \$249	249	2.1%	120	Medium
\$250 to \$299	195	1.6%	92	Medium
\$300 to \$349	496	4.1%	158	Medium
\$350 to \$399	548	4.5%	174	Medium
\$400 to \$449	993	8.2%	232	Medium
\$450 to \$499	1,428	11.8%	254	High
\$500 to \$549	1,454	12.0%	315	Medium
\$550 to \$599	1,324	10.9%	246	High
\$600 to \$649	853	7.0%	238	Medium
\$650 to \$699	760	6.3%	201	Medium
\$700 to \$749	477	3.9%	140	Medium
\$750 to \$799	335	2.8%	139	Medium
\$800 to \$899	496	4.1%	146	Medium
\$900 to \$999	204	1.7%	100	Medium
\$1,000 to \$1,249	364	3.0%	150	Medium
\$1,250 to \$1,499	52	0.4%	44	Low
\$1,500 to \$1,999	64	0.5%	52	Low
\$2,000 or more	55	0.5%	54	Low
No cash rent	1,115	9.2%	307	Medium
Median Contract Rent	\$532		N/A	
Average Contract Rent	\$555		\$48	High
RENTER-OCCUPIED HOUSING UNITS BY INCLUSION OF UTILITIES IN RENT				
Total	12,112	100.0%	590	High
Pay extra for one or more utilities	11,357	93.8%	625	High
No extra payment for any utilities	755	6.2%	198	Medium
HOUSING UNITS BY UNITS IN STRUCTURE				
Total	32,316	100.0%	163	High
1, detached	20,710	64.1%	511	High
1, attached	306	0.9%	110	Medium
2	789	2.4%	187	Medium
3 or 4	2,060	6.4%	316	High
5 to 9	2,066	6.4%	317	High
10 to 19	1,642	5.1%	282	High
20 to 49	1,053	3.3%	249	Medium
50 or more	480	1.5%	135	Medium
Mobile home	3,099	9.6%	363	High
Boat, RV, van, etc.	111	0.3%	111	Low

Source: U.S. Census Bureau, 2009-2013 American Community Survey

Reliability: High Medium Low

November 22, 2015



ACS Housing Summary

Forrest County, MS
 Forrest County, MS (28035)
 Geography: County

Forrest County Report - Contact Wyatt

	2009-2013 ACS Estimate	Percent	MOE(±)	Reliability
HOUSING UNITS BY YEAR STRUCTURE BUILT				
Total	32,316	100.0%	163	High
Built 2010 or later	251	0.8%	112	Medium
Built 2000 to 2009	6,900	21.4%	576	High
Built 1990 to 1999	4,284	13.3%	409	High
Built 1980 to 1989	3,349	10.4%	421	High
Built 1970 to 1979	5,917	18.3%	537	High
Built 1960 to 1969	4,433	13.7%	409	High
Built 1950 to 1959	3,118	9.6%	367	High
Built 1940 to 1949	1,632	5.1%	283	High
Built 1939 or earlier	2,432	7.5%	302	High
Median Year Structure Built	1978		N/A	
OCCUPIED HOUSING UNITS BY YEAR HOUSEHOLDER MOVED INTO UNIT				
Total	27,822	100.0%	631	High
Owner occupied				
Moved in 2010 or later	1,069	3.8%	289	Medium
Moved in 2000 to 2009	7,446	26.8%	606	High
Moved in 1990 to 1999	2,987	10.7%	319	High
Moved in 1980 to 1989	1,819	6.5%	260	High
Moved in 1970 to 1979	1,405	5.0%	233	High
Moved in 1969 or earlier	984	3.5%	160	High
Renter occupied				
Moved in 2010 or later	4,959	17.8%	449	High
Moved in 2000 to 2009	6,059	21.8%	464	High
Moved in 1990 to 1999	806	2.9%	205	Medium
Moved in 1980 to 1989	139	0.5%	82	Medium
Moved in 1970 to 1979	78	0.3%	65	Low
Moved in 1969 or earlier	71	0.3%	72	Low
Median Year Householder Moved Into Unit	2004		N/A	
OCCUPIED HOUSING UNITS BY HOUSE HEATING FUEL				
Total	27,822	100.0%	631	High
Utility gas	8,131	29.2%	523	High
Bottled, tank, or LP gas	1,167	4.2%	221	High
Electricity	18,159	65.3%	637	High
Fuel oil, kerosene, etc.	22	0.1%	34	Low
Coal or coke	13	0.0%	22	Low
Wood	184	0.7%	81	Medium
Solar energy	0	0.0%	29	
Other fuel	27	0.1%	44	Low
No fuel used	119	0.4%	62	Medium



ACS Housing Summary

Forrest County, MS
 Forrest County, MS (28035)
 Geography: County

Forrest County Report - Contact Wyatt

	2009-2013 ACS Estimate	Percent	MOE(±)	Reliability
OCCUPIED HOUSING UNITS BY VEHICLES AVAILABLE				
Total	27,822	100.0%	631	High
Owner occupied				
No vehicle available	467	1.7%	126	Medium
1 vehicle available	4,698	16.9%	356	High
2 vehicles available	6,957	25.0%	476	High
3 vehicles available	2,627	9.4%	350	High
4 vehicles available	697	2.5%	199	Medium
5 or more vehicles available	264	0.9%	112	Medium
Renter occupied				
No vehicle available	1,878	6.8%	292	High
1 vehicle available	5,860	21.1%	551	High
2 vehicles available	3,325	12.0%	457	High
3 vehicles available	761	2.7%	202	Medium
4 vehicles available	232	0.8%	114	Medium
5 or more vehicles available	56	0.2%	53	Low
Average Number of Vehicles Available	1.7		0.1	High

Data Note: N/A means not available.

2009-2013 ACS Estimate: The American Community Survey (ACS) replaces census sample data. Esri is releasing the 2009-2013 ACS estimates, five-year period data collected monthly from January 1, 2009 through December 31, 2013. Although the ACS includes many of the subjects previously covered by the decennial census sample, there are significant differences between the two surveys including fundamental differences in survey design and residency rules.

Margin of error (MOE): The MOE is a measure of the variability of the estimate due to sampling error. MOEs enable the data user to measure the range of uncertainty for each estimate with 90 percent confidence. The range of uncertainty is called the confidence interval, and it is calculated by taking the estimate +/- the MOE. For example, if the ACS reports an estimate of 100 with an MOE of +/- 20, then you can be 90 percent certain the value for the whole population falls between 80 and 120.

Reliability: These symbols represent threshold values that Esri has established from the Coefficients of Variation (CV) to designate the usability of the estimates. The CV measures the amount of sampling error relative to the size of the estimate, expressed as a percentage.

- High Reliability: Small CVs (less than or equal to 12 percent) are flagged green to indicate that the sampling error is small relative to the estimate and the estimate is reasonably reliable.
- Medium Reliability: Estimates with CVs between 12 and 40 are flagged yellow-use with caution.
- Low Reliability: Large CVs (over 40 percent) are flagged red to indicate that the sampling error is large relative to the estimate. The estimate is considered very unreliable.



Business Summary

Forrest County, MS
 Forrest County, MS (28035)
 Geography: County

Forrest County Report - Contact Wyatt Roberts at

Data for all businesses in area		Forrest County, ...			
Total Businesses:		3,678			
Total Employees:		44,017			
Total Residential Population:		77,259			
Employee/Residential Population Ratio:		0.57:1			
by SIC Codes		Employees			
		Number	Percent	Number	Percent
Agriculture & Mining		74	2.0%	535	1.2%
Construction		245	6.7%	2,250	5.1%
Manufacturing		83	2.3%	3,644	8.3%
Transportation		111	3.0%	1,672	3.8%
Communication		40	1.1%	306	0.7%
Utility		25	0.7%	498	1.1%
Wholesale Trade		149	4.1%	2,404	5.5%
Retail Trade Summary		779	21.2%	9,078	20.6%
Home Improvement		53	1.4%	572	1.3%
General Merchandise Stores		37	1.0%	1,765	4.0%
Food Stores		88	2.4%	662	1.5%
Auto Dealers, Gas Stations, Auto Aftermarket		119	3.2%	961	2.2%
Apparel & Accessory Stores		36	1.0%	120	0.3%
Furniture & Home Furnishings		43	1.2%	347	0.8%
Eating & Drinking Places		217	5.9%	3,688	8.4%
Miscellaneous Retail		186	5.1%	963	2.2%
Finance, Insurance, Real Estate Summary		489	13.3%	2,385	5.4%
Banks, Savings & Lending Institutions		236	6.4%	1,246	2.8%
Securities Brokers		25	0.7%	154	0.3%
Insurance Carriers & Agents		98	2.7%	507	1.2%
Real Estate, Holding, Other Investment Offices		130	3.5%	478	1.1%
Services Summary		1,409	38.3%	17,937	40.8%
Hotels & Lodging		38	1.0%	456	1.0%
Automotive Services		118	3.2%	408	0.9%
Motion Pictures & Amusements		84	2.3%	482	1.1%
Health Services		198	5.4%	8,545	19.4%
Legal Services		91	2.5%	428	1.0%
Education Institutions & Libraries		82	2.2%	2,953	6.7%
Other Services		798	21.7%	4,665	10.6%
Government		194	5.3%	3,211	7.3%
Unclassified Establishments		80	2.2%	97	0.2%
Totals		3,678	100.0%	44,017	100.0%

Source: Copyright 2015 Infogroup, Inc. All rights reserved. Esri Total Residential Population forecasts for 2015.



Business Summary

Forrest County, MS
 Forrest County, MS (28035)
 Geography: County

Forrest County Report - Contact Wyatt Roberts at

by NAICS Codes	Businesses		Employees	
	Number	Percent	Number	Percent
Agriculture, Forestry, Fishing & Hunting	13	0.4%	232	0.5%
Mining	11	0.3%	44	0.1%
Utilities	20	0.5%	419	1.0%
Construction	256	7.0%	2,288	5.2%
Manufacturing	89	2.4%	3,568	8.1%
Wholesale Trade	146	4.0%	2,367	5.4%
Retail Trade	539	14.7%	5,282	12.0%
Motor Vehicle & Parts Dealers	83	2.3%	744	1.7%
Furniture & Home Furnishings Stores	19	0.5%	122	0.3%
Electronics & Appliance Stores	21	0.6%	145	0.3%
Bldg Material & Garden Equipment & Supplies Dealers	47	1.3%	536	1.2%
Food & Beverage Stores	93	2.5%	644	1.5%
Health & Personal Care Stores	39	1.1%	306	0.7%
Gasoline Stations	36	1.0%	217	0.5%
Clothing & Clothing Accessories Stores	40	1.1%	132	0.3%
Sport Goods, Hobby, Book, & Music Stores	27	0.7%	224	0.5%
General Merchandise Stores	37	1.0%	1,765	4.0%
Miscellaneous Store Retailers	81	2.2%	331	0.8%
Nonstore Retailers	16	0.4%	116	0.3%
Transportation & Warehousing	91	2.5%	1,352	3.1%
Information	66	1.8%	640	1.5%
Finance & Insurance	365	9.9%	1,918	4.4%
Central Bank/Credit Intermediation & Related Activities	242	6.6%	1,257	2.9%
Securities, Commodity Contracts & Other Financial	25	0.7%	154	0.3%
Insurance Carriers & Related Activities; Funds, Trusts &	98	2.7%	507	1.2%
Real Estate, Rental & Leasing	206	5.6%	703	1.6%
Professional, Scientific & Tech Services	283	7.7%	1,504	3.4%
Legal Services	97	2.6%	446	1.0%
Management of Companies & Enterprises	1	0.0%	4	0.0%
Administrative & Support & Waste Management & Remediation	134	3.6%	952	2.2%
Educational Services	91	2.5%	2,861	6.5%
Health Care & Social Assistance	307	8.3%	9,956	22.6%
Arts, Entertainment & Recreation	58	1.6%	479	1.1%
Accommodation & Food Services	259	7.0%	4,174	9.5%
Accommodation	38	1.0%	456	1.0%
Food Services & Drinking Places	221	6.0%	3,718	8.4%
Other Services (except Public Administration)	464	12.6%	1,915	4.4%
Automotive Repair & Maintenance	77	2.1%	289	0.7%
Public Administration	196	5.3%	3,225	7.3%
Unclassified Establishments	83	2.3%	134	0.3%
Total	3,678	100.0%	44,017	100.0%

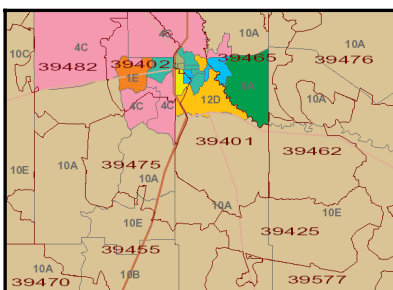
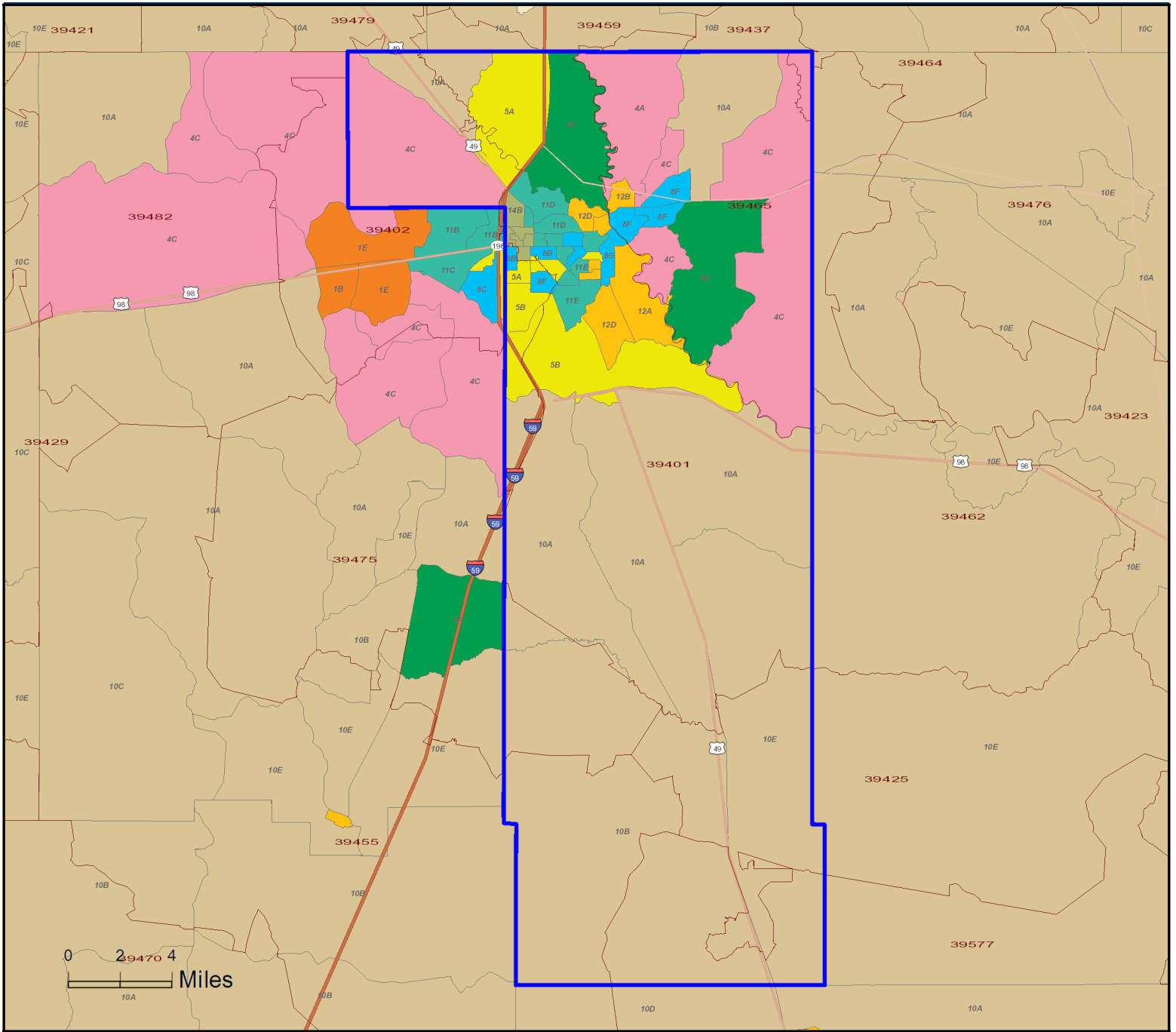
Source: Copyright 2015 Infogroup, Inc. All rights reserved. Esri Total Residential Population forecasts for 2015.



Dominant Tapestry Map

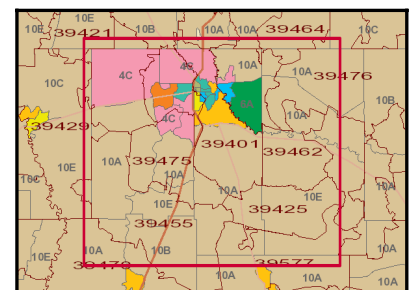
Forrest County, MS
Forrest County, MS (28035)
Geography: County

Forrest County Report - Contact Wyatt



Tapestry LifeMode

- L1: Affluent Estates
- L2: Upscale Avenues
- L3: Uptown Individuals
- L8: Middle Ground
- L4: Family Landscapes
- L9: Senior Styles
- L5: GenXurban
- L10: Rustic Outposts
- L6: Cozy Country
- L11: Midtown Singles
- L7: Ethnic Enclaves
- L12: Hometown
- L13: Next Wave
- L14: Scholars and Patriots



Source: Esri

November 22, 2015



Tapestry Segmentation

Tapestry Segmentation represents the fifth generation of market segmentation systems that began 30 years ago. The 67-segment Tapestry Segmentation system classifies U.S. neighborhoods based on their socioeconomic and demographic composition. Each segment is identified by its two-digit Segment Code. Match the two-digit segment labels on the map to the list below. Click each segment below for a detailed description.

- Segment 1A (Top Tier)
- Segment 1B (Professional Pride)
- Segment 1C (Boomburbs)
- Segment 1D (Savvy Suburbanites)
- Segment 1E (Exurbanites)
- Segment 2A (Urban Chic)
- Segment 2B (Pleasantville)
- Segment 2C (Pacific Heights)
- Segment 2D (Enterprising Professionals)
- Segment 3A (Laptops and Lattes)
- Segment 3B (Metro Renters)
- Segment 3C (Trendsetters)
- Segment 4A (Soccer Moms)
- Segment 4B (Home Improvement)
- Segment 4C (Middleburg)
- Segment 5A (Comfortable Empty Nesters)
- Segment 5B (In Style)
- Segment 5C (Parks and Rec)
- Segment 5D (Rustbelt Traditions)
- Segment 5E (Midlife Constants)
- Segment 6A (Green Acres)
- Segment 6B (Salt of the Earth)
- Segment 6C (The Great Outdoors)
- Segment 6D (Prairie Living)
- Segment 6E (Rural Resort Dwellers)
- Segment 6F (Heartland Communities)
- Segment 7A (Up and Coming Families)
- Segment 7B (Urban Villages)
- Segment 7C (American Dreamers)
- Segment 7D (Barrios Urbanos)
- Segment 7E (Valley Growers)
- Segment 7F (Southwestern Families)
- Segment 8A (City Lights)
- Segment 8B (Emerald City)
- Segment 8C (Bright Young Professionals)
- Segment 8D (Downtown Melting Pot)
- Segment 8E (Front Porches)
- Segment 8F (Old and Newcomers)
- Segment 8G (Hardscrabble Road)
- Segment 9A (Silver & Gold)
- Segment 9B (Golden Years)
- Segment 9C (The Elders)
- Segment 9D (Senior Escapes)
- Segment 9E (Retirement Communities)
- Segment 9F (Social Security Set)
- Segment 10A (Southern Satellites)
- Segment 10B (Rooted Rural)
- Segment 10C (Diners & Miners)
- Segment 10D (Down the Road)
- Segment 10E (Rural Bypasses)
- Segment 11A (City Strivers)
- Segment 11B (Young and Restless)
- Segment 11C (Metro Fusion)
- Segment 11D (Set to Impress)
- Segment 11E (City Commons)
- Segment 12A (Family Foundations)
- Segment 12B (Traditional Living)
- Segment 12C (Small Town Simplicity)
- Segment 12D (Modest Income Homes)
- Segment 13A (International Marketplace)
- Segment 13B (Las Casas)
- Segment 13C (NeWest Residents)
- Segment 13D (Fresh Ambitions)
- Segment 13E (High Rise Renters)
- Segment 14A (Military Proximity)
- Segment 14B (College Towns)
- Segment 14C (Dorms to Diplomas)
- Segment 15 (Unclassified)



Executive Summary

Forrest County, MS
Forrest County, MS (28035)
Geography: County

Forrest County Report - Contact Wyatt

Forrest County, ...

Population

2000 Population	72,604
2010 Population	74,934
2015 Population	77,259
2020 Population	79,747
2000-2010 Annual Rate	0.32%
2010-2015 Annual Rate	0.58%
2015-2020 Annual Rate	0.64%
2015 Male Population	48.0%
2015 Female Population	52.0%
2015 Median Age	32.5

In the identified area, the current year population is 77,259. In 2010, the Census count in the area was 74,934. The rate of change since 2010 was 0.58% annually. The five-year projection for the population in the area is 79,747 representing a change of 0.64% annually from 2015 to 2020. Currently, the population is 48.0% male and 52.0% female.

Median Age

The median age in this area is 32.5, compared to U.S. median age of 37.9.

Race and Ethnicity

2015 White Alone	58.5%
2015 Black Alone	36.9%
2015 American Indian/Alaska Native Alone	0.3%
2015 Asian Alone	1.0%
2015 Pacific Islander Alone	0.1%
2015 Other Race	1.8%
2015 Two or More Races	1.5%
2015 Hispanic Origin (Any Race)	3.4%

Persons of Hispanic origin represent 3.4% of the population in the identified area compared to 17.6% of the U.S. population. Persons of Hispanic Origin may be of any race. The Diversity Index, which measures the probability that two people from the same area will be from different race/ethnic groups, is 55.3 in the identified area, compared to 63.0 for the U.S. as a whole.

Households

2000 Households	27,183
2010 Households	28,746
2015 Total Households	29,666
2020 Total Households	30,646
2000-2010 Annual Rate	0.56%
2010-2015 Annual Rate	0.60%
2015-2020 Annual Rate	0.65%
2015 Average Household Size	2.48

The household count in this area has changed from 28,746 in 2010 to 29,666 in the current year, a change of 0.60% annually. The five-year projection of households is 30,646, a change of 0.65% annually from the current year total. Average household size is currently 2.48, compared to 2.48 in the year 2010. The number of families in the current year is 18,218 in the specified area.

Data Note: Income is expressed in current dollars

Source: U.S. Census Bureau, Census 2010 Summary File 1. Esri forecasts for 2015 and 2020. Esri converted Census 2000 data into 2010 geography.

November 22, 2015



Executive Summary

Forrest County, MS
Forrest County, MS (28035)
Geography: County

Forrest County Report - Contact Wyatt

Forrest County, ...

Median Household Income

2015 Median Household Income	\$33,782
2020 Median Household Income	\$38,764
2015-2020 Annual Rate	2.79%

Average Household Income

2015 Average Household Income	\$48,992
2020 Average Household Income	\$55,419
2015-2020 Annual Rate	2.50%

Per Capita Income

2015 Per Capita Income	\$19,245
2020 Per Capita Income	\$21,725
2015-2020 Annual Rate	2.45%

Households by Income

Current median household income is \$33,782 in the area, compared to \$53,217 for all U.S. households. Median household income is projected to be \$38,764 in five years, compared to \$60,683 for all U.S. households

Current average household income is \$48,992 in this area, compared to \$74,699 for all U.S. households. Average household income is projected to be \$55,419 in five years, compared to \$84,910 for all U.S. households

Current per capita income is \$19,245 in the area, compared to the U.S. per capita income of \$28,597. The per capita income is projected to be \$21,725 in five years, compared to \$32,501 for all U.S. households

Housing

2000 Total Housing Units	29,913
2000 Owner Occupied Housing Units	16,365
2000 Renter Occupied Housing Units	10,818
2000 Vacant Housing Units	2,730
2010 Total Housing Units	32,289
2010 Owner Occupied Housing Units	16,789
2010 Renter Occupied Housing Units	11,957
2010 Vacant Housing Units	3,543
2015 Total Housing Units	33,244
2015 Owner Occupied Housing Units	16,813
2015 Renter Occupied Housing Units	12,853
2015 Vacant Housing Units	3,578
2020 Total Housing Units	34,245
2020 Owner Occupied Housing Units	17,355
2020 Renter Occupied Housing Units	13,291
2020 Vacant Housing Units	3,599

Currently, 50.6% of the 33,244 housing units in the area are owner occupied; 38.7%, renter occupied; and 10.8% are vacant. Currently, in the U.S., 55.7% of the housing units in the area are owner occupied; 32.8% are renter occupied; and 11.6% are vacant. In 2010, there were 32,289 housing units in the area - 52.0% owner occupied, 37.0% renter occupied, and 11.0% vacant. The annual rate of change in housing units since 2010 is 1.30%. Median home value in the area is \$165,722, compared to a median home value of \$200,006 for the U.S. In five years, median value is projected to change by 4.43% annually to \$205,839.

Data Note: Income is expressed in current dollars

Source: U.S. Census Bureau, Census 2010 Summary File 1. Esri forecasts for 2015 and 2020. Esri converted Census 2000 data into 2010 geography.

November 22, 2015